

hp server | rp2405 | data sheet

05 series servers

Today's business environment is changing in a fundamental way. Despite significant competitive pressures, businesses must increasingly stretch their IT budgets further. For many IT managers, this has created a challenging situation—whether to purchase systems that offer enterprise-level availability and functionality or more economical systems that sacrifice functionality and reliability. Regardless of the decision, many businesses find themselves making an uncomfortable trade-off between functionality and price. As the organization's reliance on its IT infrastructure increases, the importance of this trade-off decision can literally be a matter of business survival. Sound familiar?

The HP 05 series family of servers addresses this new business reality by offering your business the capability to deliver topline results without compromising on the bottom line. Designed for workgroup applications, front-end applications (such as caching, firewall, and workload balancing), and Web, application, and small database serving, 05 series systems offer the right performance while delivering the high availability and manageability features you've come to expect from HP servers.

enterprise-class high availability

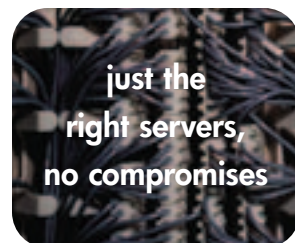
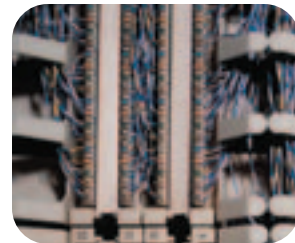
The HP 05 series of servers allow you to meet tight budgetary requirements and at the same time offer enterprise-class high availability that no one else can match. Standard high availability features on all 05 series servers include dynamic processor resilience, full ECC protection, and HP's Event Monitoring Service (EMS), which provides proactive fault avoidance, detection, and notification. Select 05 series models also offer dynamic hardware partitioning for full electrical isolation. The 05 series product family offers a wide range of high availability solutions to keep your business running, including industry-leading MC/Serviceguard.

industry-leading functionality

The 05 series product lineup offers unparalleled opportunity to manage your server resources. Integrated features such as HP Secure Web Console give you the capability of full remote management, including centralized single-system and multi-system configuration. Other industry-leading capabilities include HP-UX Workload Manager (WLM), which allows various workloads to be managed to meet the business' service-level objectives. Select 05 series models offer dynamic virtual partitioning, which allows you to run multiple workloads on different instances of HP-UX, ensuring complete software fault isolation.

easy ordering and deployment

Designed for ease of ordering and deployment, the 05 series product line offers a full range of standardized configurations that give you the flexibility to meet immediate business requirements. Pre-configured with high-powered PA-RISC processors and offering a choice of four pre-integrated and tested HP-UX 11i operating environments, 05 series servers can be put to work to rapidly address business demands. 05 series systems also offer industry-leading form factors that allow multiple servers to be racked in the data center and preserve valuable floor space, resulting in lower operating costs.





enterprise-class availability



hp server rp2405 data sheet

key features and benefits

features

enterprise-class availability

- integrated HA features such as dynamic processor resilience and full ECC protection
- built-in fault management system with separate support processor and bus; HP Event Monitoring Service (EMS), integrated with HP MC/Serviceguard; and multivendor enterprise management software products, including HP OpenView
- hot-plug SCSI disk drives

industry-leading functionality

- integrated HP Secure Web Console for Web-based management
- HP-UX Workload Manager (WLM) for goal-based workload management
- two 64-bit, 66 MHz PCI I/O slots

easy ordering and deployment

- pre-configured 650 MHz PA-8700 processors with 2.25 MB on-chip cache
- enterprise-proven HP-UX 11i operating environments
- industry's highest performance density, for up to 20 servers per rack

benefits

- reduces downtime by enabling critical system components to maintain continuous availability through advanced availability technologies
- provides superior system uptime through constant, proactive fault avoidance, detection, and notification; monitors power, cooling system hardware, processors, memory, HP-UX resources, and external storage
- improved customer availability based on ease of replacing and restoring common disks without system downtime

- provides complete single-system and multi-system administration capabilities, including a range of security features
- maximizes utilization of compute resources and improves return on investment
- solid performance for today's high-bandwidth applications

- handles demanding workloads and delivers the power required for departmental deployments
- delivers the world's best computing solution for enterprise users; pre-tested operating environments simplify configuration and shorten deployment times
- outstanding performance density and optimal use of floor space delivers greater revenue per square foot and reduces operating costs



industry-leading
functionality



hp server
rp2405
data sheet

technical specifications

	rp2405 (1-way) (A7121A)	rp2405 (2-way) (A7122A)
number of processors	1	2
total processor capacity	1	2
processor	PA-8700 (650 MHz)	PA-8700 (650 MHz)
memory	512 MB	2 GB
total memory capacity	2 GB	8 GB
internal disks	36 GB (1 x 36 GB)	72 GB (2 x 36 GB)
total internal disk capacity	146 GB	146 GB
total I/O slots	2	4
core I/O connectivity	10/100Base-T LAN, Ultra2 SCSI, SE SCSI, three RS-232 serial ports, 100Base-T management LAN	10/100Base-T LAN, Ultra2 SCSI, three RS-232 serial ports, 100Base-T management LAN
supported OS versions	HP-UX 11.0, 11i	HP-UX 11.0, 11i

availability technologies

- dynamic CPU and memory allocation/deallocation
- error checking and correction (ECC) on all CPU, cache, memory, and I/O paths
- hot-plug disk drives
- MC/Serviceguard cluster software
- advanced monitoring event monitoring system (EMS) functionality

manageability technologies

- built-in service processors
- integrated HP WebQoS peak
- integrated HP Servicecontrol Manager
- HP-UX Workload Manager (WLM) software





**easy ordering
and deployment**



**hp server
rp2405
data sheet**

physical specifications

height	Racked chassis: 2 EIA units/3.5 in/8.9 cm
width	19 in/48.3 cm
depth	28 in/71.0 cm
weight	45 lb/20 kg
operating temperature	41° to 95° F (+5 to +35° C)
nonoperating temperature	-40 to +149° F (-40 to +65° C)
max rate of temperature change	20° C/hr
operating relative humidity	15–80%, noncondensing, max. wet bulb @ 26° C
max operating altitude	3,000 m
max nonoperating altitude	4,500 m
maximum power dissipation	350 W
safety	UL listed, cUL certified, TÜV GS Mark compliant with EN 60950 and EN 41003
electromagnetic interference	Complies with FCC rules and regulations, Part 15 as a Class A Digital Device; Manufacturer's declaration to EN55022 Level A, VCCI registered, Class I, Korea RLL
product number	A7121A (1-way) and A7122A (2-way)
for more information	For more information about the HP Server rp2405, contact any of our worldwide sales offices or visit our Web sites at: www.hp.com/go/rp2405 or www.hp.com/go/05series

Technical information in this document is subject to change without notice.

© 2002 Hewlett-Packard Company

11/26/02

5981-2959EN Rev.1